

*A Guide  
to culture...*





*Arts.*

*Exhibitions.*

*Live Music.*

*Performances.*

*Culture.*

## table of contents

sculpture on the avenues.....	4-18
artisan fair.....	19
exhibitions/galleries.....	20-25
theatre/performance.....	26-27
nightlife.....	28



# *discover what's along*

Over 40 sculptures created by some of the Midwest's best known and unknown sculptors bring life to the streets of Effingham as part of the annual Sculpture on the Avenues outdoor exhibition.

Going into its 13th year, Sculpture on the Avenues is a

self-guided walking tour that begins at Effingham City Hall, located at 201 E. Jefferson Ave. From there, the exhibition winds in and out of Downtown Effingham.

Come explore the sculptures that have transformed the City's avenues into an art gallery.

## *the avenues...*

# *“Flame of Hope”*



*In 1997, the Effingham Community Committee for the Arts commissioned Leonardo Nierman's "Flame of Hope," which continues to be the focal point of the sculpture exhibition.*

## Balancing Boy and Joy

Third and Jefferson

Dana LaMair  
Springfield, MO

“Balancing Boy” and “Joy” were inspired by the artist’s children. Frolicking in this tiny garden, these imps capture the wonder and innocence of childhood.



## Child Song 2

Third and Jefferson

Mary Jane Lamberson  
Dannebrog, NE

“Child Song” is one of a series of sculptures that explore the minimal, abstract human form. This fabrication of a mother and child is created with the fewest “metal lines” possible from manipulated steel rod.



## Six Sided

Third and Jefferson

Earl Moeller  
Effingham, IL

Eight different angles and eight different views.



*A map to the sculptures can be found on Page 14.*



## Framework

Second and Jefferson  
Nathan Hilton  
Cedar Rapids, IA

The angles represent the common bonding of angles of the carbon atoms -- the building blocks of DNA and all life forms.

## Prairie Bearing

First and Jefferson  
Jeffery G. Boshard (Privately owned)  
Charleston, IL

A young corn plant with tremendous roots symbolizes the crossroads of Effingham. Four seeds rest on the hardpan as four young leaves spiral upward.



## Zephyrys

Third and Jefferson  
Matthew Rispoli  
Savoy, IL



Zephyrys is the intersection of three lines. The figure it presents is always bare and simple. However, because it is a kinetic sculpture, the intersection is constantly changing with shifts of airflow.

## Joie Aviaire

Historic Effingham County Courthouse  
Gail Chavenelle  
Dubuque, IA

Joie Aviaire explores the fluid and humorous interaction of two rigid and geometric shapes in nature, and contains glimpses in their unrefined welded and cut edges.



## La Joie D'Amis

Historic Effingham County Courthouse  
Gail Chavenelle  
Dubuque, IA

Each has only one arm emphasizing friendship as that arm embraces the shoulder of the next, forming a continuous circle of friendship.

## La Joie D'Amour

Historic Effingham County Courthouse  
Gail Chavenelle  
Dubuque, IA

The Joys of Love are shown in this from the Joie du Jardin Series. Love abounds in the spring, surrounded by blossoms.



*A map to the sculptures can be found on Page 14.*

## **Celebrate Green**

**Historic Effingham County Courthouse  
Gail Chavenelle  
Dubuque, IA**

Celebrate Green not only reminds us of conservation and sustainability with the green color, but the two figures are cut from one form - a positive and negative. The figures' arms are upraised in celebration of out action/awareness.



## **The Wall People**

**Third and Washington  
Jim Benedict  
Cedar Falls, IA**

Representing the ambiguity of our role in life, this piece creates a play of negative and positive space.



## **Heavy Frizz**

**Third and Washington  
Mary Jane Lamberson  
Dannebrog, NE**

"Heavy Frizz" is a welded steel sculpture that was strongly influenced by another artist's exploration of similar column type forms. It could be interpreted as whimsical bubbles floating or escaping upward.





## **The Leading Road**

**Third and Washington  
Earl Moeller  
Effingham, IL**

All roads of opportunity lead to the friendly City of Effingham, the City with a big heart. The artist's love for his community is evident in this sculpture.

## **Mobius**

**Fourth and Washington  
Lynn Olsen  
Valparaiso, IN**

This piece is made with stainless steel, white portland cement, latex polymers and other ingredients to produce a weatherproof and completely durable design.



## **Have a Sculpture you would like to display?**

If you would like to enter a sculpture for the 2012-2013 Sculpture on the Avenues Program  
Please email: [sudkamph@ci.effingham.il.us](mailto:sudkamph@ci.effingham.il.us)

## **Gaurdian**

**Historic Effingham County Courthouse**

**Tim Frye**

**Shumway, IL**

“The Gaurdian” stands tall to represent the strong and brave unyeilding in troubled times. This sculpture embodies the diversity within all who serve to protect where needed. Dedicated to Dustin Stuckemeyer, and all the brave men and women, called to duty in Afganistan.



## **Celebrate America**

**Historic Effingham County Court-  
house**

**Gail Chavenelle**

**Dubuque, IA**

Natural movement is the inspiration of this piece made of flexible steel, which will dance and fly on the lightest breeze.



## **Stainless Steel Flowers**

**Fifth and Washington**

**V. Skip Willits**

**Camanche, IA**

The song of gathering flowers is sung through these flowers made with stainless steel and stems of corten steel.



## Tree of Effingham

Fifth and Washington

Earl Moeller

Effingham, IL

The artist links Effingham and its many opportunities to a tree with many branches, having enough heart for everyone.



## Cohesive Narration

Banker and Washington

Kristin Garnant

Camanche, IA

This towering work cascades eight feet down in shimmering ribbons of light catching stainless steel.

## Zig Ball III

Banker and Jefferson

Mark LaMair

Springfield, MO

A shimmering vertical monument to optimism. The zig-zag represents the starts and stops we experience in life.



*A map to the sculptures can be found on Page 14.*

## **Ballerina**

**Banker and Jefferson**  
**Earl Moeller**  
**Effingham, IL**

Dance in the middle of the street. Live life to the fullest.



## **Firestone Necklace**

**Banker and Jefferson**  
**Austin Collins**  
**Notre Dame, IN**

As part of the "Temple Series," this sculpture invokes a sense of sacred space, retreat and reflection.

## **Happiness**

**Banker and Jefferson**  
**Pam Frye**  
**Shumway, IL**

Live a peaceful existence, in quiet surroundings, and enjoy where you are, "Happiness."



## **Trio of Pods**

**Banker and Jefferson**  
**Tim Frye**  
**Shumway, IL**

This Sculpture represents one stage in the circle of life.



## Echo

Fifth and Jefferson  
Kristin Garnant  
Camanche, IA

In Echo, the hard, metal tubing is twisted, curled and intertwined in a way that seems to possess fluidity and movement.



## Heart of Gold

Fifth and Jefferson  
Robert Lamberson  
Dannebrog, NE

This abstract welded steel sculpture is a whimsical depiction of a lady with great amounts of love and warmth. The abstract simplicity of the design leaves much of the interpretation to the viewer.



## Revelation

Fourth and Section  
Robert Lamberson  
Dannebrog, NE

The title is derived from the circle inside another circle, which when studied closely is revealed to be slightly off center.

## **The Whirlwind is in the Thorn Tree**

**Fifth and Section**

**V. Skip Willits (Privately Owned)**

**Camanche, IA**

“The Whirlwind is in the Thorn Tree” was inspired by a Bible verse and a song by Johnny Cash.



## **Steel Ribbon**

**Fifth and Section**

**Mark LaMair**

**Springfield, MO**

The fanciful image of a ribbon caught in the breeze juxtaposed with the rough texture of rusted steel and the negative and positive elements of light is created by the geometric cutouts.



## **Cruciform**

**Fifth and Section**

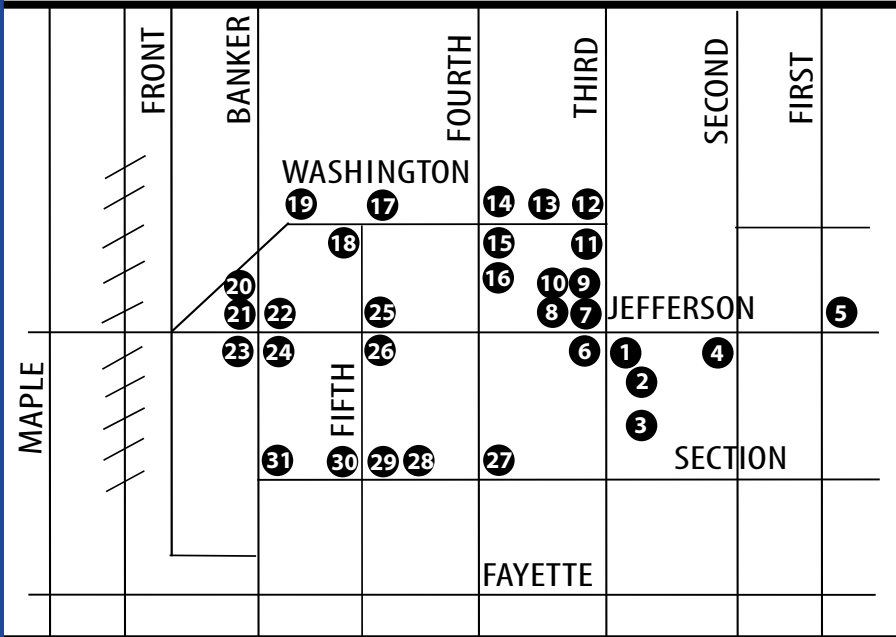
**V. Skip Willits**

**Camanche, IA**

A monolithic figure arranged in the form of a cross.



# Sculpture Map



Starting point:  
Effingham City Hall

## Blue Retracting Arch

Banker and Section

Matt Moyer

Columbia, MO

The meandering segmented arch appears to generate from an unknown source, and disappear into an equally unknown destination.



- 
1. Balancing Boy and Joy
  2. Child's Song 2
  3. Six Sided
  4. Framework
  5. Prairie Bearing
  6. Zephyrs
  7. Celebrate Green
  8. La Joie D' Amis
  9. La Joie D'Amour
  10. Joie Aviaire
  11. The Wall People
  12. Heavy Frizz
  13. The Leading Road
  14. Mobius
  15. The Gaurdian
  16. Celebrate America
  17. Steel Flowers
  18. Tree of Effingham
  19. Cohesive Narration
  20. Zig Ball III
  21. Ballerina
  22. Firestone Necklace
  23. Happiness
  24. Trio of Pods
  25. Echo
  26. Heart of Gold
  27. Revelation
  28. Thorn Tree
  29. Steel Ribbon
  30. Cruciform
  31. Blue Retracting Arch

## **Doves in Flight**

**St. Anthony's Memorial Hospital**  
503 N. Maple Street  
(Privately owned)

This piece gives hope and happiness to those in need. Take flight and live life to the fullest. Inspire all.



## **Mustang**

**Effingham Junior High School**  
600 S. Henrietta St.  
(Privately owned)

The mascot of the Effingham Junior High School is the mustang, which the sculpture represents.

## **Cruciform**

**St. Anthony Church**  
101 E. Virginia Ave.  
(Privately owned)

"Cruciform" honors the memory of Albert Niemerg and was commissioned by his family. The artist hopes the observer will take note of what is written on the surface -- a prayer of hope.





## Reflection

Martin's IGA  
101 South Merchant  
(Privately owned)

The base represents the agricultural economic base of the region, which supports the growth of the center stem, representing the City of Effingham.

## Field Flowers

Kingery Printing Co.  
3012 S. Banker St.  
(Privately owned)

Creating flowers transports the artist to a place where all things are safe, peaceful and clear.



## Things Unseen

The Fifer Center  
1104 W. Evergreen  
(Privately owned)

The artist's background as an autobody technician is evident in the technicolor realism of this sculpture. This sculpture was the winner of the 2005-06 Nierman Award, which is decided by a public ballot.

## Seven Times Down Eight Times Up

Effingham Central Fire Station  
Fayette Avenue and Maple Street

This piece was inspired by an oriental proverb recognizing man's ability to rebound from negative experiences with vitality and enthusiasm.



## Rotational Review

Mid America Motorworks  
N. Illinois 45  
(Privately owned)

A whimsical piece inspired by the scathing words of an art critic who chastised Navy Pier for juxtaposing "common" ferris wheel with fine art.



## Interested in purchasing a Sculpture?

While walking downtown did you see a sculpture that you liked? Are you interested in owning a piece for your home or business?

Contact the Effingham Visitor Center  
Phone: 217-342-5310

*art is for everyone.*



## **Annual Artisan Fair & Wine Tasting Downtown Effingham U.S. 45 and Jefferson April 27-28**

The 7th Annual Artisan Fair will include work from over 35 artists that will be on display for purchase, with several artists demonstrating their crafts. Other events include a wine tasting, which has local wineries providing samples, and live musical entertainment, which features talent from across Central Illinois. Also, a food fair will be held both days and will feature local cuisine.

For more information, contact the Effingham Tourism Office at **800-772-0750** or visit **[www.EffinghamArtisanFair.com](http://www.EffinghamArtisanFair.com)**

ARTISAN FAIR

## Effingham Art Guild

The Effingham Art Guild is home to dozens of award-winning artists. The Art Guild has traveling exhibitions that are open to the public at several different locations in the community. The exhibits change every four months and can be found at the below locations.

---

Effingham City Hall  
201 E. Jefferson Ave.

Effingham Medical Center Lobby  
900 W. Temple Ave.

Helen Matthes Library  
100 E. Market Ave.

The Effingham  
Performance Center  
1325 Outer Belt West

Joe Sipper's Cafe  
114 S. Fourth St.

Bonutti Orthopedic Clinic  
1303 W. Evergreen

---

*explore the  
visual arts.*



## Frye Pottery

Frye Pottery is located seven miles North West of Effingham and three miles east of Shumway in a beautiful country setting. Artists Tim and Pam Frye have been professional potters for nearly 30 years. They produce award-winning ceramic art, as well as functional stoneware pottery designed for everyday use. They offer ongoing pottery

classes for children and adults and have taught "Throwing on the Potter's Wheel" for a number of years.

A restored dairy barn houses their working studio and gallery with a wide selection of pottery pieces for sale. Frye Pottery also has a sculpture garden for visitors to enjoy. Frye Pottery is open by appointment.

**217-868-5583.**  
**[www.fryepottery.com](http://www.fryepottery.com)**





### **Wilhelmina Gallery**

Wilhelmina Gallery exhibits the work of Wilma Woidt Kruger, a versatile, nationally-recognized artist. Works include a stunning portrait of Marilyn Monroe, woodland and wildlife scenes, a depiction of Gone with the Wind's Tara, and much more.

The gallery is open daily 10am-9pm by chance or appointment.  
400 N. Main St.

**217-347-5874.**

### **Brush Hill Studio & Gallery**

John Gabb, artist in residence, specializes in portraits and captures life in the Midwest in his often whimsical works. The studio is located near Lake Sara, at the corner of Moccasin Road (1600th Avenue) and Lakeview Drive / Open by appointment.

**217-868-5948.**



## Historic Effingham County Court House

The Historic Effingham County Court House was built in 1871, on the site of the 1850's courthouse, which tragically burned to the ground in March 1869, reducing most of the county's records to ash.

The court house, located on the square in downtown Effingham, was the fourth one built in Effingham County and is listed on the National Register of Historic Places. The historical

structure was built in Second Empire style and is made of brick, stone and wood with 18-inch outside walls. Special features of the building are stone window headers with keystones above each window and a mansard roof with dormers.

The building was the working court house for Effingham County up until 2007, when Effingham County constructed a new courthouse two blocks west of this structure.

The Historic Effingham County Court House will be opening as a museum soon.

**800-772-0750.**

**Dr. Charles Wright House**  
**Jackson and Main, Altamont, Exit 82**  
**618-483-6397**

The stately Renaissance revival home of Dr. Charles Wright is an attraction for both history and art enthusiasts. The three story mansion, which was built in 1889, features not only the original furnishings of the home, including carpets, but also 11 paintings that have been preserved.

When touring the home, visitors are guided through 18 rooms of the mansion, including stops in the doctor's surgery, the nursery, and library. Along the tour, artwork displayed at the home also is visible, including the preserved paintings.

The house is open from 2 to 4 pm every Sunday in June, July, and August. To schedule tours outside of the operation hours, contact Linda Schmidt at (618) 483-6397 or by e-mail [info@wrightmansion.org](mailto:info@wrightmansion.org). The fee for admission is \$5 for adults and \$1 for students ages 6 to 18.



**[www.WrightMansion.org](http://www.WrightMansion.org)**

*Art is everywhere ...*

*even in  
the trees.*

Don Eden residence  
207 W. Wabash Ave.  
Effingham, IL



EXHIBITIONS/GALLERIES

## **The Effingham Performance Center**

**1325 Outer Belt West**  
**217-540-2788**

The Effingham Performance Center is a 1,524-seat live performance theatre that hosts 50 performances a year. Several nationally-recognized performers have and will take the stage at the theatre, including Steve Martin, Darius Rucker, Sara Evans, Bret Michaels, Ron White, Kenny Rogers, and REO Speedwagon.

**For more information, visit the theatre's website at [www.TheEPC.org](http://www.TheEPC.org).**



**Heart Theatre**  
**133 E. Jefferson Ave.**  
**Downtown Effingham**  
**217-342-6161**

The historical Heart Theatre is truly a work of art in itself. The glow of the original neon and the Heart Theatre sign make this 1930's landmark a must-see.



**F.A.C.E.**

Fine Arts, County of Effingham offers up consistently entertaining performances with upcoming shows including: God's Favorite.

**For more information, visit FACE's website at [www.effinghamface.com](http://www.effinghamface.com)**

---

**Three Chicks and a Stage**

A non-profit community theatre in residence at Effingham Performance Center, Three Chicks and a Stage produce original works and popular comedies to provide a creative outlet for area actors and to engage regional audiences in quality theatre. The company's annual Memorial Day tribute the military is a moving retrospective that has become a local favorite.

**Orchard Inn**  
800 N. Third St.  
217-342-9025

**Quenella's**  
303 E. Fayette Ave.  
217-342-4551

**Scrubby's**  
101 E. Jefferson Ave.  
217-342-3788

**The Hangout**  
1423 E. Fayette Ave.  
217-857-1900

**Foxx's Den Bar & Grill**  
2402 North 3rd Street  
217-342-3699

**Brass Rail Lounge**  
1410 W. Fayette Ave.  
217-342-3921

**BJ's Downtown  
Lounge**  
102 N. Main St.  
217-342-5654

**The Office**  
105 E. Jefferson Ave.  
217-347-4920



**T**he City of Effingham continues to be an art friendly community and welcomes guests and visitors to explore the arts. Whether it is catching a live show at The Effingham Performance Center, viewing a sculpture along our avenues, or listening to local performers who take the stage at night, Effingham is sure to offer a little something for everyone.

---

For more information:  
Effingham Visitor Center  
1505 Hampton Drive  
Effingham, IL 62401  
(800) 772-0750  
[www.visiteffinghamil.com](http://www.visiteffinghamil.com)